

Project Profile

General Project Information

Project Location: Iowa Route 9
Winnesheik Co., near Decorah

Date Placed: August 2001

Traffic: Current 3000 AADT, 21% trucks
Design ESALs 2,272,000

Existing Surface Condition

Previous Condition: 9" of Jointed Concrete Pavement (JCP)

Joint Spacing: 20 feet

Reinforcement: Dowelled

Surface Preparation: Varying thickness leveling course

Strata® Section

Interlayer thickness: 1"

Overlay Mix Type: Type 'A' Asphalt Cement Concrete binder & surface

Overlay Thickness: 1.5 inch Type 'A' Asphalt Cement Concrete surface
2.0 inch Type 'A' Asphalt Cement Concrete intermediate
0 to 1.5 inch leveling course

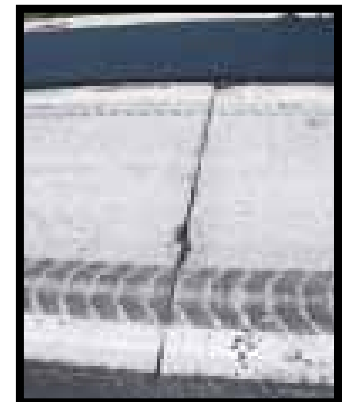
Overlay PG used: PG 58-34 surface & binder (98% reliable recommended binder)

Control Section

Control Sections: Standard hot mix asphalt

Overlay Mix Type: 1.5 inch Type 'A' Asphalt Cement Concrete surface
3.0 inch Type 'A' Asphalt Cement Concrete intermediate
Average 3.0 inch of leveling course that varied

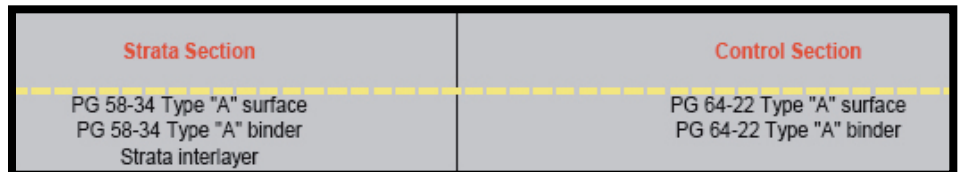
Overlay PG used: PG 64-22 surface & PG 64-22 binder (50% reliable binder)



Construction

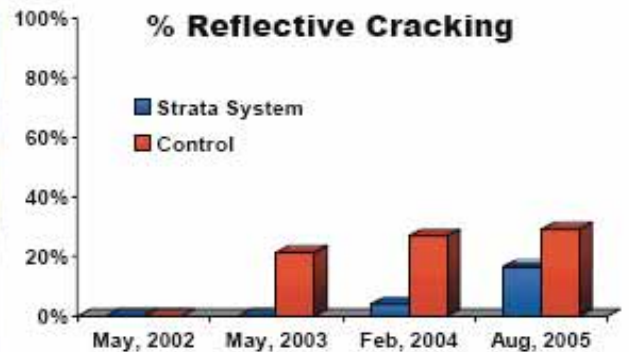
Project Layout

The Strata® and Control Sections were end-to-end as shown.



Performance Data

Crack counts after each of the first 4 years showed there was significantly less cracking in the Strata® section, as illustrated in the graph. Coring the surface reflective crack revealed that interlayer was not cracked, and that the surface crack was offset from the PCC joint as predicted, indicating there is no direct path for moisture intrusion into the pavement structure.



For more information about the Strata® reflective crack relief system or other solutions to your paving needs, contact your local Road Science™ representative.