

Project Profile

General Project Information

Project Location: SH 3, Texas City, Galveston County, TX
Date Placed: February 2002
Traffic: 3 million ESALs; 12,000 ADT

Existing Surface Condition

Previous Condition: HMA overlay over PCC
Joint Spacing: 60'
Reinforcement: 5/8" dowels
Surface Preparation: Milled to 1"

Strata® Section

Interlayer thickness: 1"
Overlay mix type: Superpave
Overlay Thickness: 2.5"
Overlay PG used: 76-22

Control Section

Control Sections Placed:
 A. Chip seal and 1.5" HMA overlay
 B. Mill to 1", Fabric, 2.5" HMA overlay
 D. No treatment or chip seal

Overlay mix type: Superpave
Overlay PG used: 76-22

Project Layout

D	Section C	
D	Section A	Section B

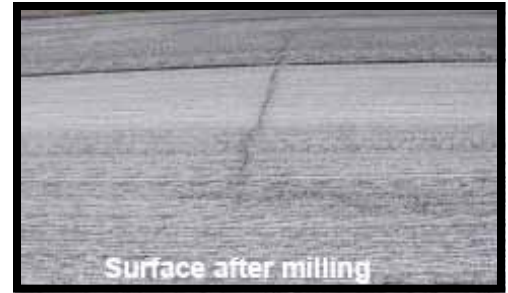
A = Chip seal with 1.5" PG 76-22 overlay
 B = Mill 1" - Fabric - 2.5" PG 76-22 overlay
 C = Mill 2" - 1" Strata® Interlayer - 2.5" PG76-22 overlay
 D = Control Section - No treatment or chip seal

Performance Data

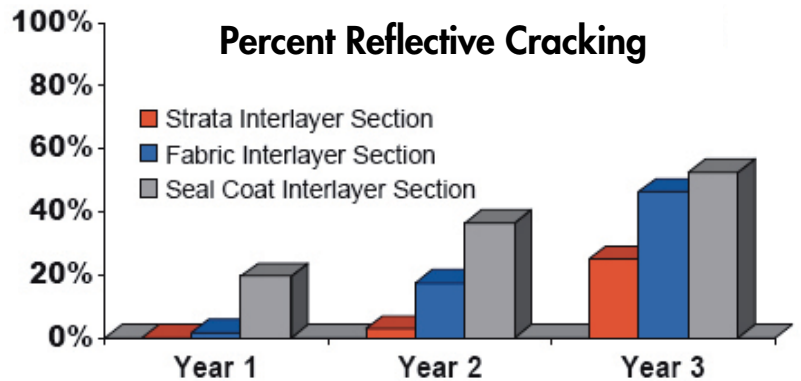
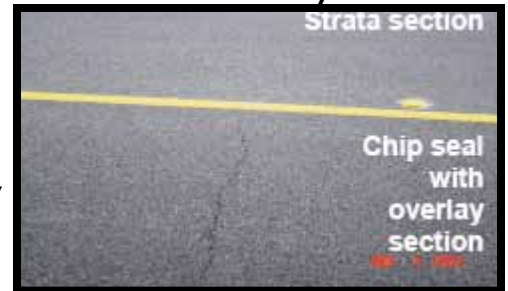
Performance evaluations were made after one, two and three years. The graph shows the percent of preexisting cracks that have reflected through the new surface.

For more information about the Strata® reflective crack relief system or other solutions to your paving needs, contact your local Road Science™ representative.

Preconstruction photo



Photos after 1 year



Road Science™
Division of ArrMaz